



AT THE FOREFRONT

UChicago
Medicine

UHI + GME

Community Champions

Program

Supplemental information for
applicants

Community Champions Program

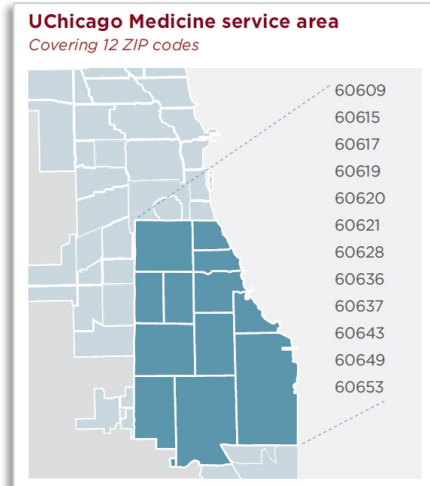
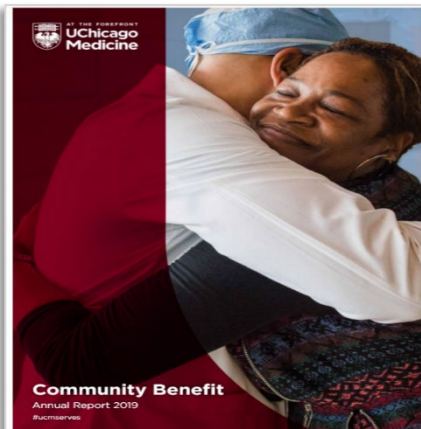
Goal:

The Community Champions program seeks to empower, connect, and support resident/fellow leaders in community engagement.

The Community Champions will participate in a didactic curriculum and collaborate with the Urban Health Initiative on a community-benefit longitudinal project. Each Community Champion will have the opportunity to receive mentorship from faculty and community leaders. Each participant will be expected to be an ambassador to their programs to engage co-residents/co-fellows and other team members in community engagement programming.

Recognizing the healthcare disparities impacting Chicago's South Side community, it is our hope that through community engagement, more residents and fellows will seek opportunities and choose to work on Chicago's South Side after completing training.

UChicago Medicine and Our Community

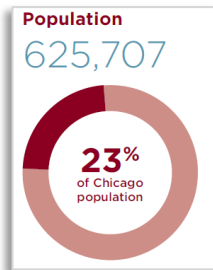


The Urban Health Initiative (UHI) is the University of Chicago Medicine's community health department, which administers our population health and community benefit programs



“As the COVID-19 pandemic has made tragically clear, health disparities in our South Side communities put residents at significantly higher risk for illness – whether chronic disease or viral infection. While UChicago Medicine has made robust investments toward improving health equity, there is a renewed urgency to quickly adapt to this changed landscape and join with community partners in addressing current and evolving healthcare needs.”

Brenda Battle, RN, BSN, MBA
Vice President of the Urban Health Initiative
Chief Diversity, Inclusion and Equity Officer



- UHI Sponsored Programs include:**
- Community Grand Round
 - Violence Prevention and Recovery
 - Health Fairs
 - Neighborhood Days of Service
 - Talk Radio Health Shows
 - Mobile Clinics



Selection Criteria

- PGY 2 or above level residents/fellows are eligible to apply
- Each applicant must be in good academic standing with approval from the PD
- Each applicant will submit an essay
 - How have you been involved in community engagement in the past?
 - What is your motivation to continue this involvement and why are you interested in participating in the Community Champions program in particular?
 - What unique characteristics or ideas can you bring to this engagement?

Program Components

- Curriculum
- Project Participation
- **Mentorship/Networking**
- **Alumni Engagement**

Program Components

- Curriculum
 - Each resident community champion will participate in a community engagement curriculum
 - Each resident community champion will help facilitate program participation in the curriculum
- Project Participation
 - Each resident champion will be a liaison for their department/program to participate in UHI community activities
 - Each resident champion must participate in 6 activities, (at least 4 directly involving community engagement projects) from July to June

Timeline

- May-June: Request for applications and selection of participants
- July-June 2022:
 - Time commitment: 4-8 hours per month
 - Participate in educational curriculum
 - At least 6 community participation sessions
 - UHI Program choice of participation led by resident/fellow Community Champion liaison examples include:
 - STEM career sessions with middle school/high school students
 - Ask the Doctor Health Panels
 - Community Day of Service
 - Cooking demonstrations
 - Community grand rounds
 - Radio health sessions
 - Facebook Live sessions
 - Working meetings with community leaders and public health officials

Resident Champions Opportunities

- Education on healthcare inequity and opportunities to make a difference in our community outreach
- Opportunities to be leaders in your department for community engagement (e.g. Resident Chief of Community Outreach)
- Quarterly mentoring and networking events
- Honorarium for each resident/fellow Community Champion
- Branded materials and supplies, free meals and transportation for community based sessions

Community Champions in Action



Edwin McDonald, MD
Director of Diversity and
Inclusion for GME



Alanna Burnett, MD
Community Champion



Ross McMillan, MD
Community Champion



Community Grand Rounds-
LGBTQIA Youth Issues:
Homelessness and the Pandemic

Tune into WVON 1690 this Saturday,
February 13th 1-2pm to hear Community
Champions on the Community Health Focus
Hour! Watch via Facebook Live or Tune in
Live on WVON 1690AM

Isolation & Covid-19 Panel Discussion

Chicago Editor
COMMUNITY VOICES: A Q&A from UChicago Medicine,

In this series, the University of Chicago Medicine examines health-related challenges faced by communities served by the South Side-based academic health system through interviews featuring a variety of perspectives. This is the seventh in a 10-part series

Health - Medicine - Society
14 Feb 2021 21:00PM Sponsored by UChicago Medicine

Interview: Dr. Anita Blanchard, Professor of Obstetrics and Gynecology, and Associate Dean for Graduate Medical Education, and Dr. Alanna Burnett Stinson, a resident physician with a strong interest in health disparities, talk about an innovative way to address health inequity.

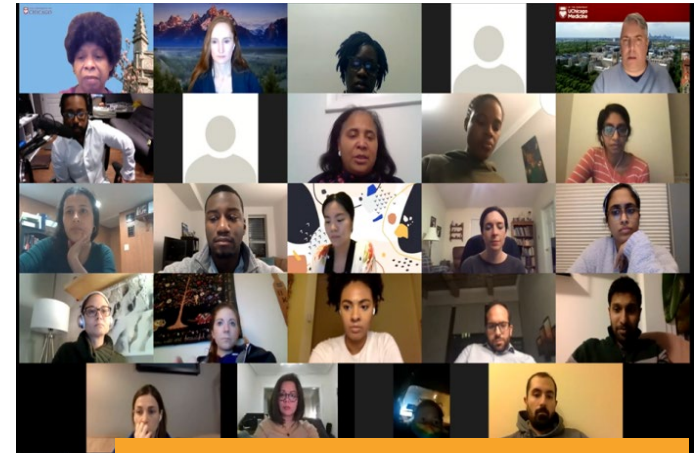
Q: Tell me about Community Champions, how it came to be, and its pilot project on COVID-19. Dr. Blanchard: I grew up on the South Side of Chicago. I had an impression of the University of Chicago as an impenetrable ivory tower. I never dreamed that I would actually work here. I've always wanted to make it



Dr. Anita Blanchard

Dr. Alanna Burnett Stinson

Dr. Anita Blanchard gagripy yamato photo Dr. Alanna Burnett Stinson francis soo photo



Community Champions
Orientation 1/29/2021



AT THE FOREFRONT
**UChicago
Medicine**